

Jig (square set)(4x40) music "Monique's Jig" Muriel Johnstone's Band

Beyond Bond

- 1-4 N+S dance Parallel "R/ L Hook-turns" *
- 5-8 E+W dance parallel "L/R Hook-turns"

- 9-16 N+S dance "La Baratte" with opposite dancer. Start with the Rh cross . join Rh with partner after 5 bars , dance out to opposite sides & turn Rh.
- 17 -24 E+W repeat the above movement

- All are now on opposite sides facing in with nearer hands joined, ladies on L..*

- 25-26 All dance the first 2 bars of a Scheihallion reel with the Ladies twirling clockwise as they dance across, & the men casting to partner's position.
- 27-28 All face and setR to new partner & swop (Rh) on the setL to put the ladies again into the man's normal position.
- 29-32 Repeat the last 4 bars, but men dance straight on & round one place clockwise as the ladies twirl across. All turn Rh into Allemande on the SetL.

- 33-40 All Allemande a/c 2 places[4bars].
All turn 3/4 Rh , set to new partner & turn in joining nearer hands.

Ladies will have finished across from their starting positions, the men will have moved 1 place clockwise .

R/ L Hook- turn begin as if reeling...hands down

- [1] curve in, pass Rsh , face across the line of dance, Rsh to Rsh ,
- [2] dance a tight half-circle.a/c. ...stay within arm's length!
- [3&4] raise hands, take Lh hold & turn , (normally back to starting places).

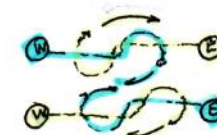
This dance is a cocktail of figures both shaken and stirred (whence its name) & is intended to be challenging to dance. In compensation, it should be easy to memorise. N B ... you will pair up with every opp. sex dancer in the set for one of the 4 repeats.

BP Oct 2014
Sq-set Jig x40

Beyond Bond



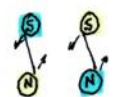
Parallel R^{sh} pass + L^t turns [4]



Parallel L^{sh} pass + R^t turns. [4]



Rh. cross [2]



Back, lady under change hands [2]



re-cross (reverse Lh) [1]



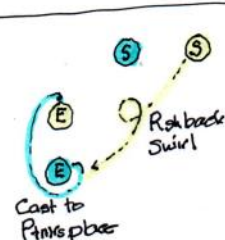
Join Partner RH [1]



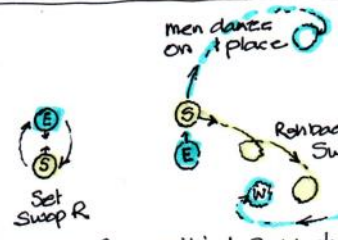
turn RH [2]

N+S dance "La Baratte"

E+W dance "La Baratte"



Cast to Partner



men dance on 1 place

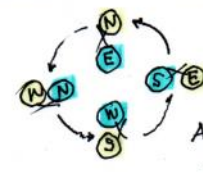


Set Sweep R

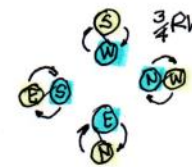


Set Rh into Allemande

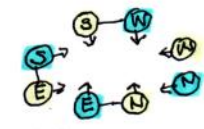
All dance 2 modified Scheihallion passes.



Allemande 1/2 way [4]



3/4 Rh [2], Set, turning to restart positions



Set Rh into Allemande