

Bardill/Prince 2007 Dances for sets of 5 individual dancers

Jig 5,5,32,5 music "Inchmickery" by Keith Smith & Muriel Johnstone

Supping Honey

1-16 While 1(N)&2 (E) set (gently), 5 dances out of the set, NE & turns back.
All 3 dance a 1/2 RH tpt to put 5 back in the centre facing NW.

Repeat the above 4bar figure, 5 dancing NW with 2 & 4
Repeat, 5 dancing SW with 2 & 3
Repeat, 5 dancing SE with 2 & 1

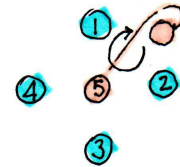
17-24 5 dance out NE to dance 1/2 Lsh reel of 3 with 4(N) + 3(W), 1/2 Rsh reel of 3 on the spine with 1(S) + 3(N)

25-32 5 dances out of the set NE, loops left to re-enter from NW,
while..... points move 1pl clockwise
by: set adv, circle, set back twice to new place

5 dances to centre facing S(2), sets, and exchanges RH.

	N	E	S	W	Centre facing
End	4	1	5	3	2 S but spin to face NE

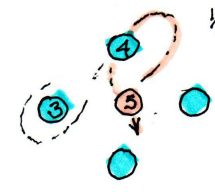
Supping Honey



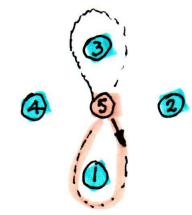
Dance this
1/2 RH Tpt
Back
[4]

Repeat dancing out NW [4]
SW [4]
SE [4]

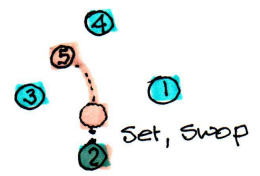
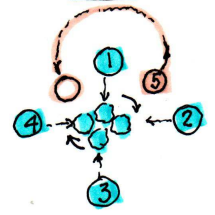
[16]



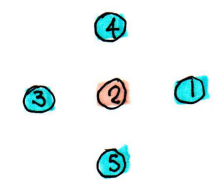
1/2 Lsh reel



1/2 Rsh reel.



Set, swap



restart.

Bees in the flower borders in summer were the inspiration for this dance. The setting of the dancers at points in the first 16 bars just represent the petals brushed back by the bee and thus should be very gentle and with a little body sway.